

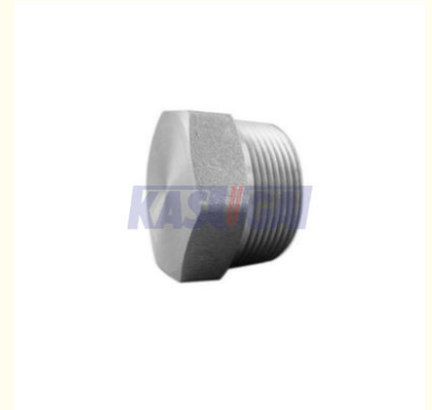


## Carbon Steel Threaded Hex Head Plug , High Pressure Carbon Steel Weld Fittings

Our Product Introduction

### Basic Information

- Place of Origin: China
- Brand Name: Kasugai
- Model Number: ASTM A105 ASME B16.11 High Pressure Carbon Steel Threaded (THD) Hex Head Plug
- Minimum Order Quantity: Negotiable
- Price: Negotiable
- Packaging Details: Seaworthy Packing
- Delivery Time: 30 - 60 working days
- Payment Terms: L / C , T / T
- Supply Ability: 500 ton per month



### Product Specification

- Product Name: ASTM A105 ASME B16.11 High Pressure Carbon Steel Threaded (THD) Hex Head Plug
- Thread Type: ASME B1.20.1(NPT)
- Size Range: 1/8" To 4"
- Pressure Class: Class 2000 3000 6000
- Standard: ASTM A105
- Dimensions: ASME B16.11
- Highlight: **Carbon Steel Threaded Hex Head Plug, High Pressure Carbon Steel Weld Fittings, High Pressure Threaded Hex Head Plug**

for more products please visit us on [flangespipefittings.com](http://flangespipefittings.com)

## Product Description

### ASTM A105 ASME B16.11 High Pressure Carbon Steel Threaded Hex Head Plug

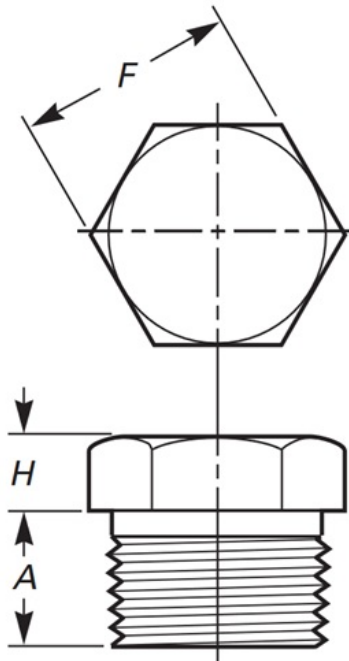
#### Product Information

Product Name	ASTM A105 ASME B16.11 High Pressure Carbon Steel Threaded (THD) Hex Head Plug
Thread Types	ASME B1.20.1(NPT)
Dimensions	ASME B16.11
Size Range	1/8" to 4"
Pressure Class	Class 2000 6000 9000
Standards	ASTM A105

#### Standards & Materials: ASTM A105 Fitting Chemical Composition (%)

Steel Class	C max	Si	Mn	P max	S max	Ni max	Cr max	Mo max	V max
A105	0.35	0.10-0.35	0.60-1.05	0.035	0.040	0.40	0.30	0.12	0.08

#### Dimensions of ASME B16.11 Hex Head Plug (mm)



NPS	Min. Length, A	Nominal Width Flats, F <sup>(1)</sup>	Min. Hex Height, H
1/8	10	11.11	6
1/4	11	15.88	6
3/8	13	17.46	8
1/2	14	22.23	8
3/4	16	26.99	10
1	19	34.93	10
1 1/4	21	44.45	14
1 1/2	21	50.80	16
2	22	63.50	18
2 1/2	27	76.20	19
3	28	88.90	21
4	32	117.48	25

**General Note:** All dimensions are in millimeters

**Notes:**

(1)Manufacturer's applied tolerance shall ensure dimensions will fit U.S. Customary tooling.